

---

# Proposition 47 Joint Local Advisory Committee (JLAC) Summary Report

## December 2020

---

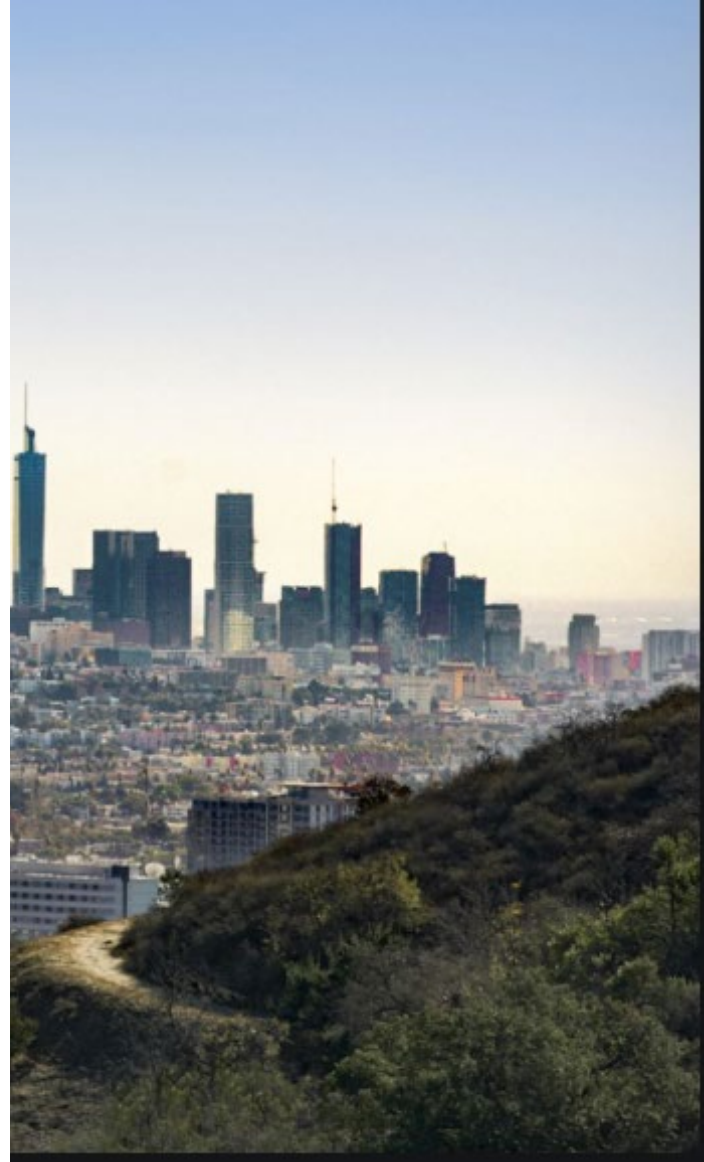
On November 4, 2014, California voters passed Proposition 47, a law that changed certain low-level crimes from potential felonies to misdemeanors.

The savings from reduced incarceration costs were to be invested into drug and mental health treatment and other programs.

In 2017 the California Board of State and Community Corrections (BSCC) granted 23 applicants \$103,000,000 to develop programs, including four grantees from Los Angeles city and county. In 2019 the BSCC granted 23 applicants \$96,000,000 to develop programs, including five grantees from Los Angeles city and County.

The Prop 47 Joint Local Advisory Committee is convened by the Los Angeles County Department of Health Services Office of Diversion and Reentry and the Mayor's Office of Reentry, as recipients of Prop 47 funding, and seeks to promote transparency, accountability and collaboration between grantees themselves as well as all stakeholders, centered on those in the community most impacted by the criminal justice system.

---



**JLAC Schedule of Meetings**

<b>Summary Report Released (subject to change)</b>	<b>JLAC Meeting Date (subject to change)</b>
July 15, 2020 [Covering program inception to May 30, 2020]	Thursday July 30, 2020, 5-7pm (Zoom)
November 30, 2020	Tuesday January 5, 2021
February 28, 2020	Tuesday March 30, 2021
May 30th, 2020	Thursday July 29, 2021
November 15, 2020	Tuesday November 30, 2021

**Summary Reports**

This summary is available online at: <http://dhs.lacounty.gov/wps/portal/dhs/diversionandreentry> under “Reentry Division” tab. The timing of our written reports is tied to our reporting schedule with the BSCC. The first report includes data from program inception until March 30, 2020 for the Mayor’s Office and inception to July 12, 2020 for DHS ODR. Future reports will cover 3 months of data.

For all programs, grantees are using a gender and racial equality lens to analyze outcomes. Our goal is for equitable program outcomes across race and gender, meaning that service and outcome demographics match the demographics of eligible participants. We are seeking to compile data to determine the demographic composition of eligible program participants and aim to provide that information to the extent possible for future reports.

**Los Angeles County Department of Health Services, Office of Diversion & Reentry**

**Project Title:** Proposition 47 –Reentry Intensive Case Management Services (RICMS), Interim Reentry Housing, Skills and Experience for the Careers of Tomorrow (SECTOR)

**Program Summary:** The Los Angeles County Department of Health Services Office of Diversion and Reentry will expand reentry-focused intensive case management, housing, and wrap-around services as well as create sector-based employment services and improve health and employment outcomes and reduce recidivism among justice involved individuals with mild to moderate substance use and mental health disorders.

<b>Prop 47 Grant Approved by BSCC</b>	
Grant 1, (June 16, 2017 to August 15, 2021)	\$20,000,000
Grant 2 (August 15, 2019 – May 15, 2023)	\$18,616,627

<b>Planned Expenditures (Combine Grant 1 and 2)</b>	
Reentry Intensive Case Management Program (RICMS) – Began April 2018	\$19,448,474
Interim Housing Program – Began March 2019	\$3,933,790
SECTOR Employment and Training Program – Providers begin services January 2021	\$10,808,208
Data Collection and Evaluation -- Began June 16, 2017	\$2,128,040
Staffing and Professional Services -- Began June 16, 2017	\$2,492,721

## Program Performance

<b>Program: Interim Housing</b>
<p><b>Program Description:</b> There are two interim housing sites for men and one site for women. Christ Centered Ministries operates one of the houses for men with 20 beds and the house for women with 20 beds. First to Serve operates the second house for men with 36 beds. All three sites are managed by ODR and provide a safe recovery space for justice-involved individuals enrolled in the Reentry Intensive Case Management Services (RICMS) program. The Christ Centered Ministries Reentry House for men is fully funded by Proposition 47 while the other two sites are funded by Whole Person Care.</p>
<p><b>Period of Performance:</b></p> <p>Christ Centered Ministries Reentry House for men: March 2019 to November 2020</p> <p>Christ Centered Ministries Reentry House for women: July 2020 to November 2020</p> <p>First to Serve Reentry House for men: July 2020 to November 2020</p>
<p><b>Number of Participants Enrolled:</b></p> <p>Christ Centered Ministries house for men: Since the CCM Reentry House for men opened in March 2019, 58 clients have resided at the site.</p>

<p>Christ Centered Ministries house for women: Since the CCM Reentry House for women opened in July 2020, 7 clients have resided at the site.</p> <p>First to Serve House for men: Since the CCM Reentry House for women opened in July 2020, 41 clients have resided at the site.</p>		
<p><b>Population Served:</b> Clients of RICMS and other ODR reentry services, as needed.</p>		
<p><b>Contracted Service Providers:</b> Christ Centered Ministries and First to Serve.</p>		
<p><b>Highlights and Accomplishment since last JLAC:</b></p> <ul style="list-style-type: none"> <li>The First to Serve Reentry House for men that has 36 beds has served 41 individuals since its inception 3 months ago.</li> </ul>		
<p><b>Challenges since last JLAC:</b></p> <ul style="list-style-type: none"> <li>Filling the CCM house for women has been challenging. Despite steady referrals from CHWs, clients are reticent to live in shared housing.</li> <li>All three interim housing sites have been quarantined due to COVID-19 infections.</li> </ul>		
<p><b>Christ Centered Ministries Reentry House for men</b></p>		
<b>Race</b>	<b>Number of clients placed in housing by race</b>	<b>Percent of clients placed in housing by race</b>
<i>Black</i>	27	46.5%
<i>Hispanic &amp; Latinx</i>	26	45%
<i>White</i>	1	1.7%
<i>Asian</i>	2	3.4%
<i>American Indian/Alaskan/Native Hawaiian/Pacific Islander</i>	1	1.7%
<i>Data not collected</i>	1	1.7%
<p><b>Christ Centered Ministries Reentry House for women</b></p>		
<i>Black</i>	3	43%
<i>Hispanic &amp; Latinx</i>	3	43%
<i>White</i>	1	14%
<i>Asian</i>	0	0
<i>American Indian/Alaskan/Native Hawaiian/Pacific Islander</i>	0	0
<i>Data not collected</i>	0	0
<p><b>First to Serve Reentry House for men</b></p>		
<i>Black</i>	17	41%
<i>Hispanic &amp; Latinx</i>	16	39%
<i>White</i>	8	20%
<i>Asian</i>	0	0

<i>American Indian/Alaskan/Native Hawaiian/Pacific Islander</i>	0	0
<i>Data not collected</i>	0	0

**Program: Reentry Intensive Case Management Services (RICMS)**

**Program Description:** Care Coordination and Service Navigation program that utilizes Community Health Workers (CHWs) with lived experience to provide case management and peer mentorship. CHWs link clients to various services including but not limited to: mental health, substance use, primary care physicians, housing, employment, benefits establishment, legal, court mandated programs, family reunification, getting IDs, transportation and more.

**Period of Performance:** July, 2017 - November, 2020

**Number of Community Health Workers (CHWs):** 101

**Caseload Capacity:** 3,030 slots

**Active clients:** 2,269

**Population Served:** Adults with an arrest, charge or conviction record with mild to moderate mental health and substance use disorder.

**Contracted Service Providers:** There are 29 contracted service providers across all 8 County Service Planning Areas and 34 service locations.

- Highlights and Accomplishment since last JLAC:**
- ODR received funding through the County Productivity Investment Fund to manage trainings for RICMS providers.
  - ODR executed a training contract with the Transitions Clinic Network which will improve RICMS capacity to support clients' health needs.

- Challenges since last JLAC:**
- The California Department of Corrections and Rehabilitation (CDCR) has recently referred us clients with higher mental health needs than RICMS providers have the capacity to address. We have been working through ODR's partners to ensure those clients receive the level of care they need.

**Program Data (Expressed as raw number and %)  
July 2017 - November 2020**

<b>Metric</b>			
<i>Number enrolled by race/ethnicity</i>	<b>Race</b>	<b>Number</b>	<b>Percent</b>
	Black	4,944	34%
	Hispanic & Latinx	6,178	42%
	White	2,668	18%
	Other	888	6%
	<b>Total</b>	<b>14,678</b>	<b>100%</b>
	<b>Gender</b>	<b>Number</b>	<b>Percent</b>

<i>Number enrolled by gender</i>	Male	11,258	77%
	Female	3,235	22%
	Other	185	1%
	<b>Total</b>	<b>14,678</b>	100%
	<b>Number</b>		<b>Percent</b>
<i>Number served (less than 45 days)</i>	7,083		48%
<i>Number served (Between 45 days – 90 days)</i>	3,067		21%
<i>Number served (3 - 6 months)</i>	2,221		15%
<i>Number served (6 - 9 months)</i>	996		7%
<i>Number served (9 months – 1 year)</i>	584		4%
<i>Number served (1year+)</i>	727		5%
<b>Total</b>	<b>14,678</b>		100%

## Quantity and Types of Referrals made May 1, 2020-November 30, 2020

In May 2020 the RICMS program rolled out a new process for tracking service referrals within their database. This allows for greater insight on the types and quantities of referrals made. Because this is a new process, referrals made before May 1, 2020 are not fully captured. In the table below “Total Service Referrals” shows the total number of referrals made and recorded in the database by RICMS CHWs between May 1st and November 30, 2020. In total, 7,277 referrals were made for 1,973 individuals.

<b>Total Service Referrals</b>	<b>7,277</b>
<b>Individual Clients Served</b>	<b>1,973</b>

<b>Referral Categories</b>	<b>Number</b>	<b>Percent</b>
<i>Assistance with Food</i>	1,275	17.5%
<i>Basic Necessities (Clothing, Hygiene Kit, Phone Charger, etc.)</i>	498	7.0%
<i>Education</i>	172	2.3%
<i>Employment</i>	807	11%
<i>Housing</i>	1,045	14.4%
<i>Legal Services (ID Cards, Record Expungement, etc.)</i>	514	7.0%
<i>Mental Health</i>	311	4.2%
<i>Other Supportive Services</i>	1,169	16.0%
<i>Social Services (CalFresh, Medi-Cal, etc.)</i>	401	5.5%
<i>SPDAT</i>	37	0.5%
<i>Substance Use</i>	155	2.1%

<i>Transportation (Gas Cards, Ride Share Rides, etc.)</i>	414	6.0%
<i>Voter Education</i>	441	6.0%
<i>Voter Registration</i>	38	0.5%

<b>Program: SECTOR</b>
<b>Period of Performance:</b> Providers will begin services in January 2021
<b>Population Served:</b> Prop 47 eligible individuals from Los Angeles County who are interested in pursuing career pathways.
<p><b>Program Description:</b> The purpose of the Skills and Experience for the Careers of Tomorrow (SECTOR) Program is to offer career pathway opportunities and family-sustaining wages for people impacted by the justice system. The SECTOR Program is aimed at: 1) reducing unemployment and increasing earnings; 2) reducing recidivism; and 3) improving behavioral health and well-being by preparing and matching people with justice involvement to jobs in high-growth industries.</p> <p>The goal is to expand upon the employment and training options that are currently available (such as in Construction Trades and Hospitality), and forge pathways into new sectors (such as Technology and Healthcare) with opportunities that pay well with good benefits and offer advancement.</p> <p>Core program components include:</p> <ul style="list-style-type: none"> <li>• Skills training that results in industry-recognized, stackable credentials and/or paid work experience that provides participants with real-world experience, skills, and connections that lead to a permanent, unsubsidized job with an employer.</li> <li>• Career coaching and job matching services to prepare and place participants into unsubsidized positions with employers.</li> <li>• Financial assistance provided to participants in the form of wages from paid work experience programs, stipends during skills training sessions, and/or assistance accessing public benefits and other resources to ensure that participants have financial support and stability while they are enrolled in the program.</li> <li>• Connection to supportive services including mental health and substance use disorder counseling if needed.</li> <li>• Cognitive behavioral intervention (CBI) group sessions to prevent recidivism and build problem-solving skills to prepare participants for success in the workplace and continued advancement in their career path.</li> </ul>
<b>Highlights and Accomplishment since last JLAC:</b>

- 
- The DHS review committee selected 6 community based organizations throughout Los Angeles County to provide the SECTOR program to an anticipated 500 individuals annually. The organizations are:
    - Alliance for Community Empowerment (San Fernando Valley)
    - Anti-Recidivism Coalition (Metro LA, South LA)
    - Chrysalis (Metro LA, Westside, San Fernando Valley)
    - Covenant House California (Hollywood, 18-24 year olds)
    - Friends Outside in Los Angeles Country (Metro LA)
    - Paving the Way (San Fernando Valley)
  - Contracts were signed in November and providers participated in onboarding activities and trainings throughout the remainder of 2020 with the intention of launching services in January 2021.



## Los Angeles Mayor’s Office of Economic Opportunity, Office of Reentry

**Project Title:** Proposition 47 Project impact

**Program Summary:** Project imPACT serves formerly incarcerated individuals by providing employment services in tandem with peer support, legal services, and behavioral health services. Program participants, called Fellows, receive wrap around services holistically by a multi-disciplinary team that consists of: a Peer Navigator with a history of justice-involvement; an Attorney to address collateral consequences of justice-involvement; and a Counselor to provide individual and group-based therapy. Project ImPACT combines employment services with evidence-based practices that specifically serve formerly incarcerated individuals, to increase the program participant’s chances to successfully obtain and retain employment.

<b>Prop 47 Grant Approved by BSCC</b>	<b>Total Granted</b>
<b>Grant 1, (June 16, 2017 to August 15, 2021)</b>	\$5,998,384
Project imPACT Planned Expenditures:	
- Service Provider Contracts	\$4,725,908
- Data Collection/Evaluation	\$511,422
- Staffing	\$761,054
<b>Grant 2 (August 15, 2019 – May 15, 2023)</b>	\$5,999,304
Project imPACT Planned Expenditures:	
- Service Provider Contracts	\$4,914,632
- Data Collection/Evaluation	\$505,000
- Staffing	\$579,672

## Program Performance

<b>Project Title: Project imPACT</b>
<b>Project Period of Performance:</b> June 12, 2017 to September 30, 2020
<b>Number of Participants Enrolled:</b> 432
<b>Population Served:</b> 1269
<b>Contracted Service Providers:</b> 9

**Highlights and Accomplishment since last JLAC:** In August 2020, Project imPACT services includes offering subsidized shared housing units for Fellows who are employed. Project imPACT performance goal is to house 20 Fellows during each remaining program year. Since September, 5 Fellows have been housed.

**Challenges since last JLAC:** Due to the Covid-19 pandemic, most program services are provided virtually. There is limited technology software and hardware access for many program participants.

<b>Performance Goals</b>				
<b>Metric</b>	<b>Performance Indicator (Goal)</b>	<b>Performance Outcome</b>	<b>Performance Outcome/ Performance Goal</b>	<b>Percentage Rate Actual Achievement</b>
<i>Number of Fellows Served</i>	420	1,269	3 times goal	302%
<i>Number of Fellows Enrolled</i>	198	432	2.1 times goal	218%
<i>Number of Fellows placed in permanent jobs</i>	200	140	70% of goal	70%

<b>Program Data (Expressed as raw number and %)</b>			
<b>June 12, 2017 - September 2020</b>			
<b>Metric</b>			
<i>Number enrolled by race/ethnicity</i>	<b>Race</b>	<b>Number</b>	<b>Percent</b>
	Black	223	53.6%
	Hispanic & Latinx	143	34.4%
	White	40	9.6%
	Other	10	2.4%
	<b>Total</b>	<b>416</b>	<b>100%</b>
<i>Number enrolled by gender</i>	<b>Gender</b>	<b>Number</b>	<b>Percent</b>
	Male	343	79.4%
	Female	88	20.4%
	Other	1	0.2%
	<b>Total</b>	<b>416</b>	<b>100%</b>
<b>Number of Services</b>		<b>Number (%) of Fellows</b>	
One service		43 (10.0%)	
Two services		70 (16.2%)	

---

Three services	301 (69.7%)
<b>Service Category</b>	<b>Number (%) of Fellows</b>
Employment	389 (90.0%)
Behavioral Health	341 (78.9%)
Legal	356 (82.4%)

---